

Features:

UP to 25.78Gb/s bi-directional data links

Hot-Pluggable SFP28 footprint

Single LC for Bi-directional Transmission

1271nm DFB laser transmitter for NSS-S25-L30-2731

1331nm DFB laser transmitter for NSS-S25-L30-3127

Up to 30km on 9/125um SMF

2-wire interface for management specifications compliant with SFF 8472 digital diagnostic monitoring interface for optical transceivers

Power Supply :+3.3V

Operating case temperature Range: Commercial: 0~ 70°C

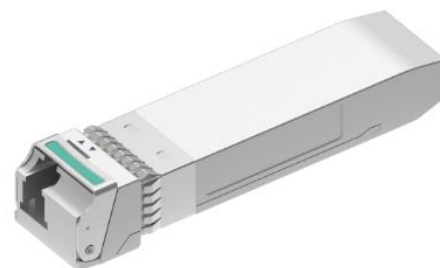
Industrial:-40~ 85°C

RoHS compliant

Applications:

25GE ER Lite

eCPRI&CPRI



Part Number Ordering Information

NSS-S25-L30-2731	SFP28 30km BIDirectional optical transceiver with full real-time digital diagnostic monitoring ,1271nm Transmitter&1331nm Receiver,0~70°C, 25GE
NSS-S25-L30-3127	SFP28 30km BIDirectional optical transceiver with full real-time digital diagnostic monitoring , 1331nm Transmitter&1271nm Receiver, 0~70°C, 25GE
NSS-S25-L30-2733I	SFP28 30km BIDirectional optical transceiver with full real-time digital diagnostic monitoring ,1271nm Transmitter&1331nm Receiver,-40~85°C, 25GE
NSS-S25-L30-3127I	SFP28 30km BIDirectional optical transceiver with full real-time digital diagnostic monitoring , 1331nm Transmitter&1271nm Receiver, -40~85°C, 25GE

Description:

NSS-S25-L30-3127/ NSS-S25-L30-2731 SFP28 transceivers are designed for use in Ethernet links up to 25.78 Gb/s data rate and up to 30 km link length. They are compliant SFF-8472 , and compatible with SFF-8432 and applicable portions of SFF-8431. The product is RoHS compliant and lead-free per Directive 2011/96/EU.

Pin Function Definitions

PIN #	Name	Function	Notes
1	VeeT	Module transmitter ground	1
2	Fault	Module transmitter Fault	2
3	Disable	Transmitter Disable; Turns off transmitter laser output	3
4	SDL	2 wire serial interface data input/output (SDA)	4
5	SCL	2 wire serial interface clock input (SCL)	4
6	MOD-ABS	Module Absent, connect to VeeR or VeeT in the module	2
7	RS0	Rate select0: module inputs and are pulled low to VeeT with > 30 kΩ resistors in the module.	
8	LOS	Receiver Loss of Signal Indication	
9	RS1	Rate select1: module inputs and are pulled low to VeeT with > 30 kΩ resistors in the module.	
10	VeeR	Module receiver ground	1
11	VeeR	Module receiver ground	1
12	RD-	Receiver inverted data out put	
13	RD+	Receiver non-inverted data out put	
14	VeeR	Module receiver ground	1
15	VccR	Module receiver 3.3V supply	
16	VccT	Module transmitter 3.3V supply	
17	VeeT	Module transmitter ground	1
18	TD+	Transmitter non-inverted data out put	
19	TD-	Transmitter inverted data out put	
20	VeeT	Module transmitter ground	1

Note:

1. The module ground pins shall be isolated from the module case.
2. This pin is an open collector/drain output pin and shall be pulled up with 4.7K-10Kohms to Host_Vcc on the host board.
3. This pin shall be pulled up with 4.7K-10Kohms to VccT in the module.
4. This pin is an open collector/drain output pin and shall be pulled up with 4.7K-10Kohms to Host_Vcc on the host board.

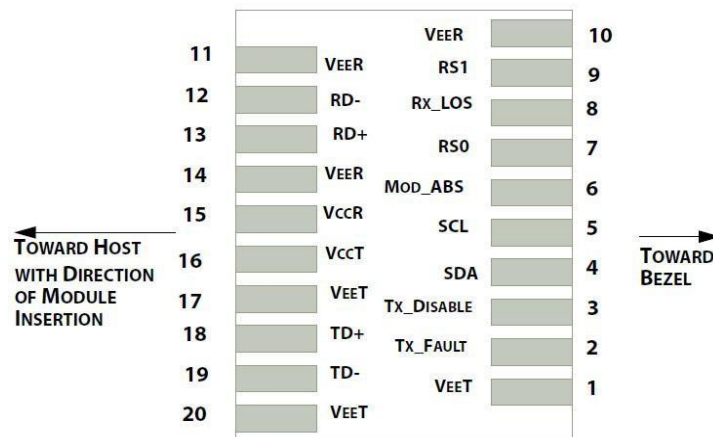


Diagram of Host Board Connector Block Pin Numbers and Names

Absolute Maximum Ratings

Parameter	Symbol	Min.	Typical	Max.	Unit	Note
Storage Temperature	T _S	-40		+85	°C	
Case Operating Temperature	T _c	0		+70	°C	Commercial
Case Operating Temperature	T _c	-40		+85	°C	Industrial
Maximum Supply Voltage	Vcc	0		3.6	V	

Relative Humidity(Non-condensing)	RH	0	85	%	
-----------------------------------	----	---	----	---	--

Electrical Characteristics

Parameter	Symbol	Min.	Typical	Max.	Unit	Note
Supply Voltage	V _{CC}	3.14		3.46	V	
Supply Current	I _{CC}			450	mA	Industrial
Power Consumption	P			1.5	W	Industrial
Data Rate	R		25.78		Gb/s	
Fiber Length	L			30	KM	
Transmitter Section:						
Input differential impedance	R _{in}		100		Ω	1
Differential input voltage swing	V _{in,pp}	180		450	mV	2
Transmit Disable Voltage	V _D	2		V _{CC}	V	3
Transmit Enable Voltage	V _{EN}	V _{EE}		V _{EE} +0.8	V	
Receiver Section:						
Single Ended Output Voltage Tolerance	V	-0.3		4	V	
Single ended data output swing	V _{out,pp}	180		450	mV	
LOS Fault	V _{LOS fault}	2		V _{CC} _{HO} _{ST}	V	4
LOS Normal	V _{LOS norm}	V _{EE}		V _{EE} +0.8	V	4

Note:

1. Connected directly to TX data input pins. AC coupling from pins into laser driver IC.
2. Per SFF-8431 Rev 3.0
3. Into 100 ohms differential termination.
4. LOS is an open collector output. Should be pulled up with 4.7k – 10kΩ on the host board. Normal operation is logic 0; loss of signal is logic 1. Maximum pull-up voltage is 5.5V.

Optical Characteristics

Parameter	Symbol	Min.	Typical	Max.	Unit	Note
Transmitter Section:						
Center Wavelength	λ _t	1260	1271	1280	nm	1271 Tx
		1300	1311	1320	nm	1311 Tx
Spectral width(-20dB)	Δλ			1	nm	
Average Optical Power	P _{avg}	0		+6.0	dBm	
Laser Off Power	P _{off}			-30	dBm	
Side Mode Suppression Ratio	SMSR	30			dB	
Extinction Ratio	ER	4			dB	
Optical Return Loss Tolerance				-20	dB	
Receiver Section:						
Receiver Center Wavelength	λ _r	1300		1320	nm	1311 Rx
		1260		1280	nm	1271 Rx
Average Receiver Power	S _{en}	-19		-7	dBm	
Receiver Sensitivity	OMA			-19	dBm	Note 1
Los Assert	LOS _A	-30			dBm	
Los Dessert	LOS _D			-20	dBm	
Los Hysteresis	LOS _H	0.5		5	dB	

Overload	PSaturation	-5			dBm	Note1
----------	-------------	----	--	--	-----	-------

Note:

1. Measured with a PRBS 2³¹-1 test pattern, @25.78Gb/s, BER<5E-5.

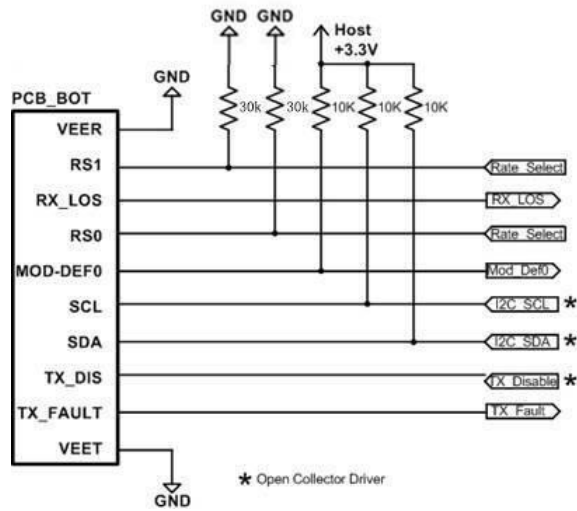
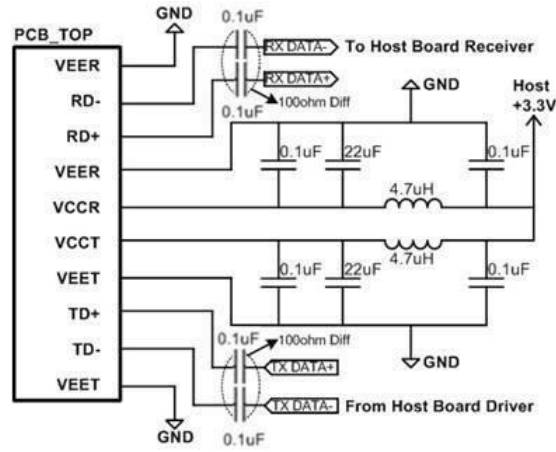
Timing Characteristics

Parameter	Symbol	Min.	Typical	Max.	Unit
TX_Disable Assert Time	t_off			100	us
TX_Disable Negate Time	t_on			2	ms
Time to Initialize 2-wire interface	t_2w_start_up			300	ms
Time to Initialize	t_start_up			300	ms
Time to Initialize cooled module and time to power up a cooled module to Power level II	t_start_up_cooled			90	s
Time to Power Up to Level II	t_power_level2			300	ms
Time to Power Down from Level II	t_power_down			300	ms
Tx_Fault assert	Tx_Fault_on			1	ms
Tx_Fault assert for cooled module	Tx_Fault_on_cooled			50	ms
TX_FAULT Reset	t_reset	10			us
Rx_LOS assert delay	t_los_on			100	us
Rx_LOS negate delay	t_los_off			100	us

Digital Diagnostic Specifications

Parameter	Symbol	Units	Min	Max	Accuracy	Note
Transceiver Temperature	Temp	°C	-40	+85	±5°C	Industrial
			0	+70	±5 °C	Commercial
Transceiver Supply Voltage	Voltage	V	3.15	3.45	±3%	
Transmitter Bias Current	Bias	mA	0	35	±10%	
Transmitter Output Power	Tx-Power	dBm	-5	+2	±3dB	
Receiver Average Optical Input Power	Rx-Power	dBm	-12	-2	±3dB	

Recommended Circuit:



Recommended High-speed Interface Circuit

Mechanical Dimensions:

